

Amphibious hovercraft Neptune 23GP



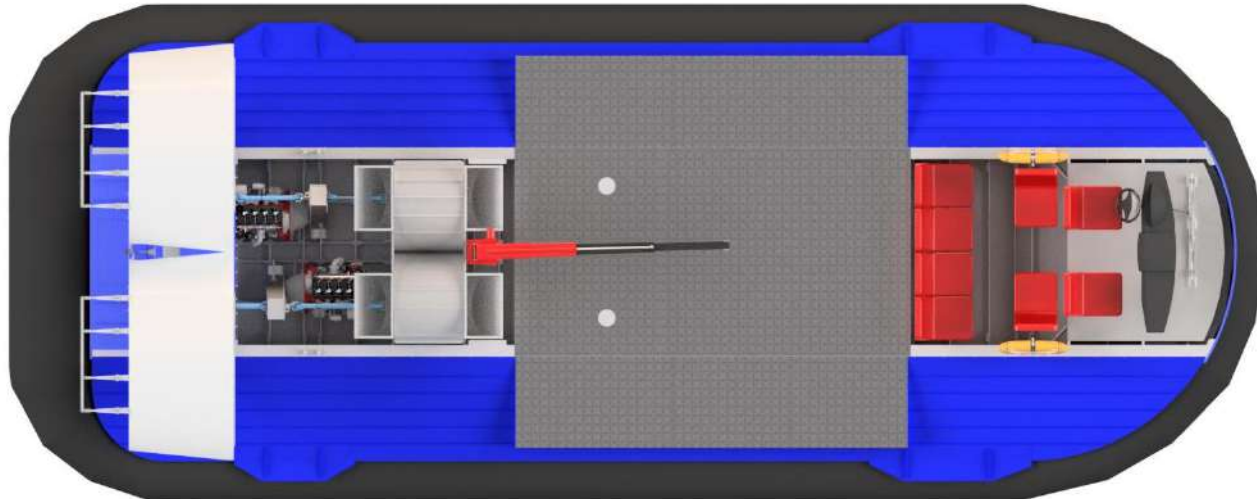
SPECIFICATION

	Neptune 23GP
Main dimensions (length x width), m	11.7 x 4.3
Air cushion height (clearance), m	0.75
Maximum passenger capacity, pers.	7
Minimum crew	1
Payload, t	2.2
Cabin length, m	3.0
Cargo deck length x width, m	4.0 x 4.0
Engine brand / engine type	Cummins 2.8 / diesel or FPT (Iveco) 3.0 / diesel
Engine power x number of engines	160 hp x 2 or 197 hp x 2
Fuel capacity, l	400
Average fuel consumption (water / ice), l / h	40/30
Operating speed (water / ice), km / h	45/50
Maximum speed (water / ice), km / h	70/90

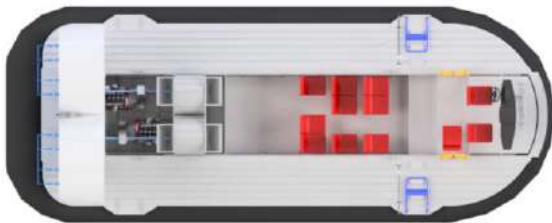
INTERIOR OPTIONS

At the request of the customer and the water area of operation, the vessel can have different options for the internal location, including with cargo areas. The maximum possible capacity is 23 people, including the crew, or about 2 tons of payload.

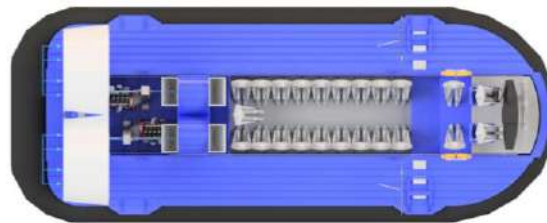
Cargo/passenger type
7(6) passengers + 1(2) crew + 1.4 t cargo.



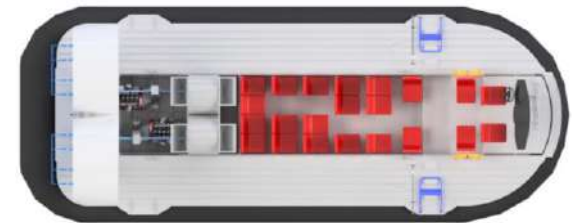
Small craft type
12 pers. Including crew + 1 t cargo.



Shuttle passenger type
22 passengers + 1 crew



Comfort passenger type
20 passengers + 2 crew.



DESIGN FEATURES

HULL and SUPERSTRUCTURE

Riveted construction made of corrosion resistant aluminum magnesium alloys.

Hulls of the vessel have several waterproof compartments.

Depth - 0.75 m

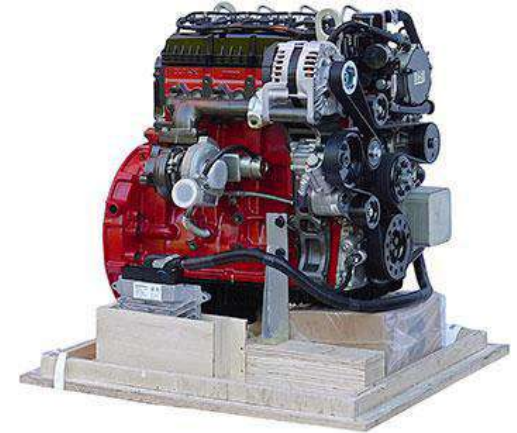
Fiberglass sandwich type

Color scheme at the request of the customer

Spacious cabin with double glazing

Wheelhouse Nep 23 with rear view

Cargo hatch



ENGINES

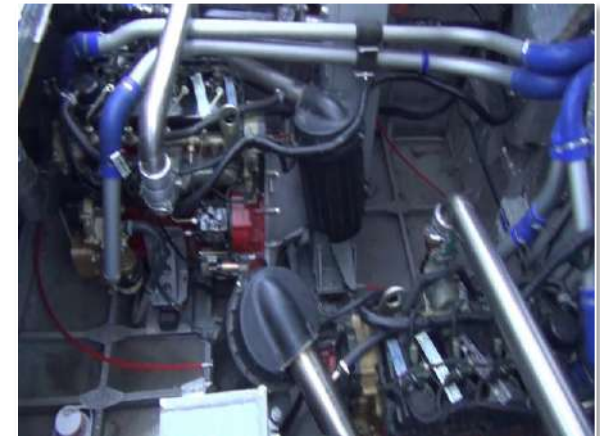
Two Cummins ISF2.8 diesel engines rated at 160 hp each or two Iveco 3.0 diesel engines rated at 197 hp each.

PROPULSION

Variable pitch low-noise propellers in aerodynamic nozzles

propeller pitch change electric amplifiers

Composite Propeller Blades

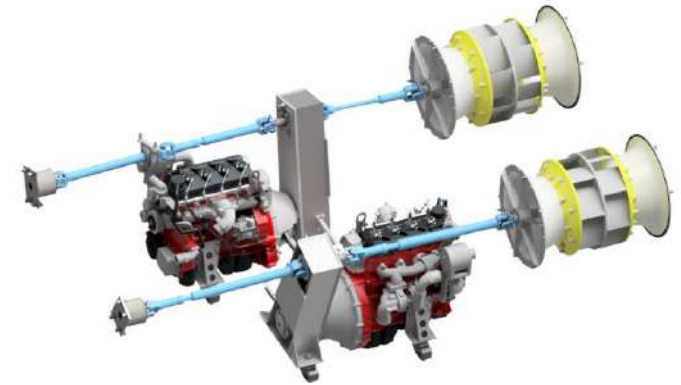


LIFT FANS

Two high-speed centrifugal fans on the left and right side

Composite fan structure

Possibility of rise on one fan



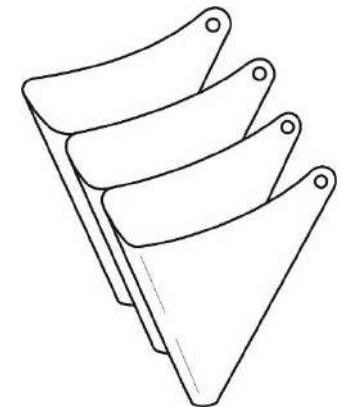
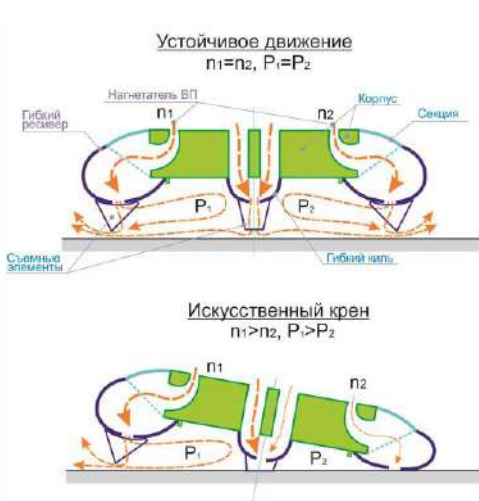
FLEXIBLE SKIRT AIR CUSHION

Skirt-style bunk curtain with removable fingers in the lower tier

Skirt apron against splashes

Material - rubberized nylon

Possibility of roll by creating different pressure on the air cushion P_1 and P_2 on the left and right side



HOVERCRAFT SYSTEMS AND DEVICES

Ballast system

Fire system

Trim Control System

The system for monitoring the position of the angle of attack of the blade

Drainage system

Heating system

Ventilation system

Autonomous heating system (two Hydronic heaters)

Fuel filtration system

Trip controller for the operation of the engine type Multitronics

Lifting and towing device (4 eyebolts)

Life-saving appliances (lifejackets, lifebuoys, liferafts)

Search Lights

Lightning rod, 12V sockets, handrails

Navigation lights and flashing light

Dashboard with drawers, cup holders, heating nozzles

Triplex windshield with wiper blades and washer nozzles



Photos exterior



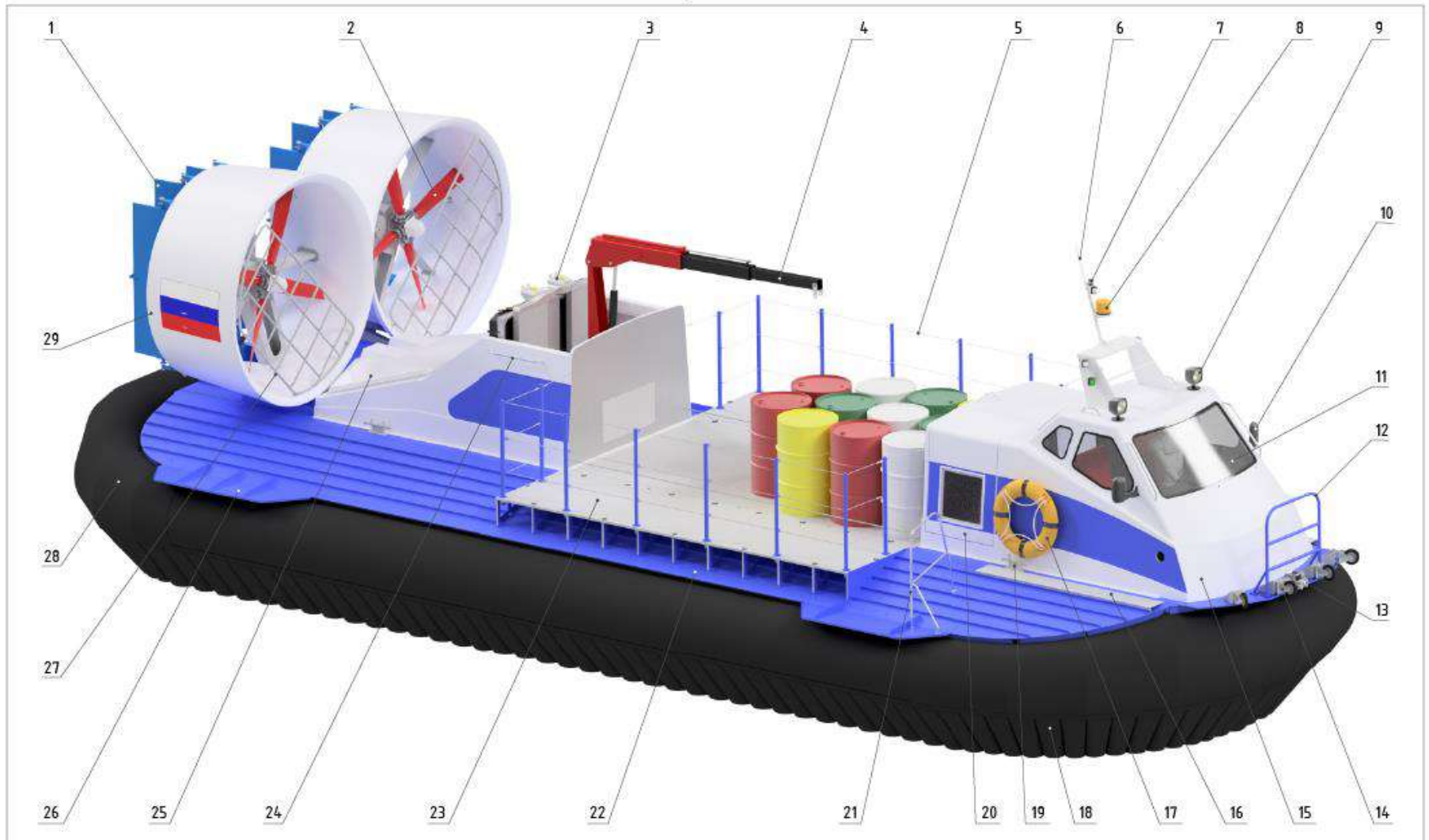
Photos cargo deck



Videos



Air-Cushion Vehicle (Hovercraft) Neptune 23 type cargo version



1. Air rudders (8 pcs.).
2. Propeller variable pitch (2 pcs.).
3. Water-air radiators.
4. Knuckle boom light-duty crane.
5. Removable guard rail.
6. Lightning rod.
7. Navigation lights.
8. Flashing light.
9. Manual spotlight (2 pcs.).

10. Electrically heated rear view mirrors.
11. Electric Windshield.
12. Handrail.
13. Winch.
14. Roller Fenders.
15. Fiberglass sandwich cabin. 8 prs.
16. Side track.
17. Lifebuoy (2 pcs.).
18. Removable skirt elements.

19. Lifting mooring bitt (4 um.).
20. Starboard door, 750 mm wide.
21. Handrails.
22. Hinged section.
23. Cargo deck 4x4 m.
24. Handrail.
25. Engine compartment. Engines Cummins or Iveco (2 pcs.).
26. Crinoline (4 pcs.).
27. Protective grill.

28. Flexible cushion fence (skirt). Receiver.
29. Aerodynamic nozzles.

SHIPYARD PARMA (HOVERCRFAT)

1A, Truda street, Podporoje city, Leningradskiy region, 187783, RUSSIA

Phone +7 916 4998181

WhatsApp +7 921 4054572

E-mail: nhovercraft@gmail.com

YouTube <https://www.youtube.com/NeptuneHovercraft>

Web site <https://parmarcraft.com>

Instagram <https://www.instagram.com/parmacraft>

VK <https://vk.com/hovercraft>

Telegram <https://t.me/parmacraft>

Dzen <https://zen.yandex.ru/parma>